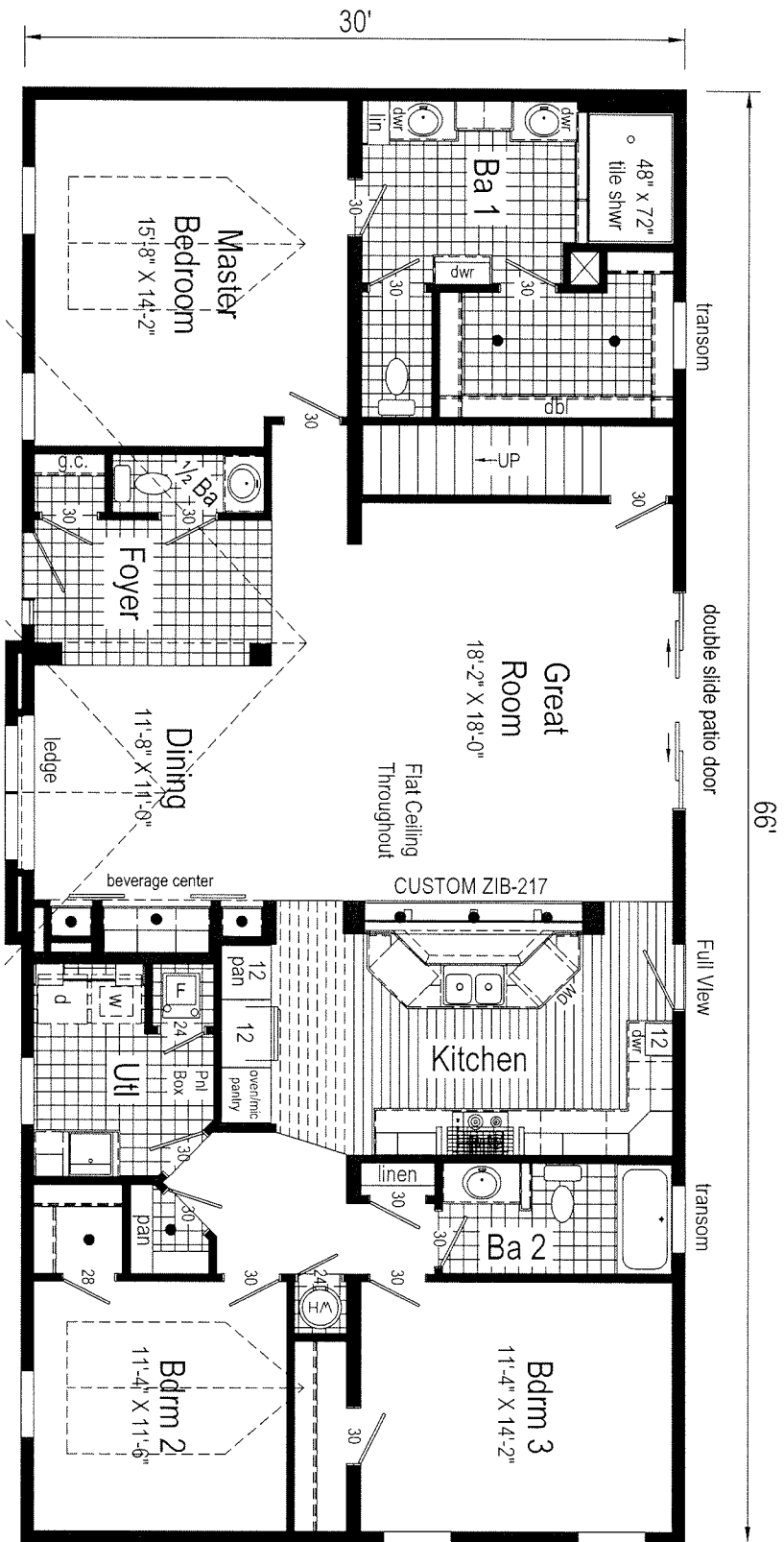


NOTE: This home may require wall bracing tie-downs depending on wind/seismic design. Please refer to the permit set for tie-down loads and locations if applicable. Some areas of the exterior wall sheathing may be shipped loose to allow access for tie-down installation. All tie-down designs are by others.

AW460-A7

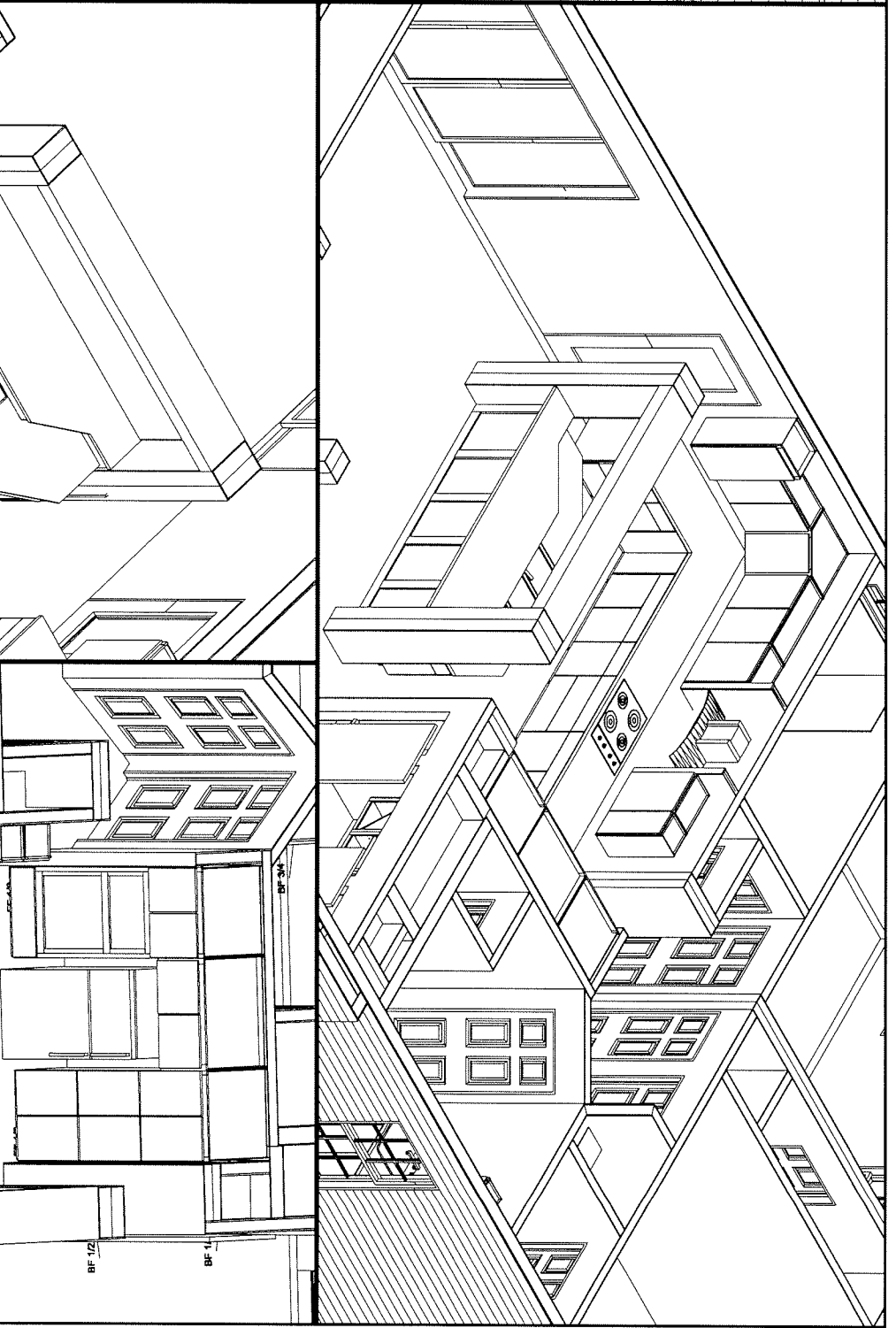


AW460-A7 3266 Approx. 1980 Sq. Ft.

Note: Because of varying state requirements and optional equipment, some or all of the utility locations might change per floor plan (ie: furnaces, w/h, stairwell). Consult your sales representative for exact specifications.

Builder:	Commodore Homes of Indiana	Colour:	3266
Title:	Literature	Revisions	Date
		Number	
		Scale:	1/8" = 1'-0"
		Drawn By:	BB
		Date:	06/14/2018
		Reference:	AW460-A
		Cust. STOCK	Dir: CALLAGHAN HOMES
			SN: 16248
		Model/Eng. No.:	AW460-A7
			LIT
		Pg.:	

Qty	Size (W x H)	Style	Type	Cabinet
2	14 1/2 x 29	Door	Base	(2)ZLBR3036
Door/Drawer Schedule HALF BA				
1	14 1/2 x 29	Door	Base	(1)ZLBR3036
Door/Drawer Schedule BEV CTR & UTL & KIT				
3	14 1/2 x 29	Door	Base	(1)ZLBR15, (2)ZLBR30
2	20 1/2 x 22 1/4	Door	Base	(1)ZBR23615, (1)ZBR23615
2	20 1/2 x 22 1/4	Door	Base	(1)ZBR23615, (1)ZBR23615
2	17 1/2 x 22 1/4	Door	Base	(1)ZBR18, (1)ZBR18
2	17 1/2 x 6 1/2	Drawer	Base	(1)ZBR18, (1)ZBR18
3	14 1/2 x 29	Door	Wall	(1)ZMVF530, (1)ZMVF530, (1)ZMVF530
2	17 1/2 x 19 1/2	Door	Wall	(1)ZMVF530, (1)ZMVF530
1	29 1/2 x 11	Drawer	Full	(1)ZMOC306827TK
2	14 1/2 x 22 1/2	Door	Full	(2)ZMOC306827TK
6	14 1/2 x 29	Door	Full	(6)ZL306827TK
Door/Drawer Schedule KITCHEN & BA2				
9	17 1/2 x 22 1/4	Door	Base	(1)ZBE1845R, (1)ZBE1845L, (1)ZBE1845R, (1)ZBE1845L, (2)ZB36, (1)ZB36, (2)ZB36
2	35 1/2 x 6 1/2	Drawer	Base	(1)ZBR36, (1)ZBR36
2	20 1/2 x 29	Door	Base	(2)ZLBR4236
2	20 1/2 x 22 1/4	Door	Base	(2)ZBR4236
1	41 1/2 x 6 1/2	Drawer	Base	(1)ZBR42
2	29 1/2 x 11	Drawer	Base	(2)ZBR30
2	29 1/2 x 6 1/2	Drawer	Base	(1)ZBR30, (1)ZBR30
5	17 1/2 x 6 1/2	Drawer	Base	(1)ZBE1845R, (1)ZBE1845L, (1)ZBE1845R, (1)ZBE1845L, (1)ZB18
2	20 1/2 x 11	Drawer	Base	(2)ZBR21
1	20 1/2 x 6 1/2	Drawer	Base	(1)ZBR21
3	14 1/2 x 22 1/4	Door	Base	(2)ZB30, (1)ZB15
1	14 1/2 x 6 1/2	Drawer	Base	(1)ZB15
2	10 1/4 x 29	Door	Base	(2)ZCB36
1	11 5/8 x 29	Door	Wall	(1)ZMVF230
2	20 1/2 x 29	Door	Wall	(1)ZMVF30, (1)ZMVF30
2	17 1/2 x 29	Door	Wall	(2)ZMVF30
3	14 1/2 x 29	Door	Wall	(1)ZCWF430, (2)ZMVF30
1	17 1/2 x 39	Door	Wall	(1)ZMVF194215G



NOTE: This is an artistic rendering. building materials may be optional or differ from what is shown.

Qty	Size (W x H)	Style	Type	Cabinet
4	17 1/2 x 11	Drawer	Base	(2)ZLDB3636L, (2)ZLDB3636R
2	17 1/2 x 29	Door	Base	(1)ZLDB3636L, (1)ZLDB3636R
2	17 1/2 x 6 1/2	Drawer	Base	(1)ZLDB3636L, (1)ZLDB3636R
2	29 1/2 x 11	Drawer	Base	(2)ZDB303515
1	29 1/2 x 6 1/2	Drawer	Base	(1)ZDB303515
2	14 1/2 x 22 1/4	Door	Base	(1)ZIBN154215, (1)ZIBN1542
2	14 1/2 x 29	Door	Wall	(2)ZMVF30
2	11 5/8 x 39	Door	Full	(2)ZU1284TK

Door/Drawer Schedule	BA1	Type	Cabinet
Qty	Size (W x H)	Style	Type
4	17 1/2 x 11	Drawer	Base
2	17 1/2 x 29	Door	Base
2	17 1/2 x 6 1/2	Drawer	Base
2	29 1/2 x 11	Drawer	Base
1	29 1/2 x 6 1/2	Drawer	Base
2	14 1/2 x 22 1/4	Door	Base
2	14 1/2 x 29	Door	Wall
2	11 5/8 x 39	Door	Full

Builder	Colour	Revisions	Scale	Date	Cust. STOCK	Model/Eng. No.
Commodore Homes of Indiana	3266	Number	N.T.S.	06/14/2018	CALLAGHAN HOMES	AW460-A7
Isometric		Date	Drawn By	Reference:	Dir.	Pg.
			BB	AW460-A	16248	ISO

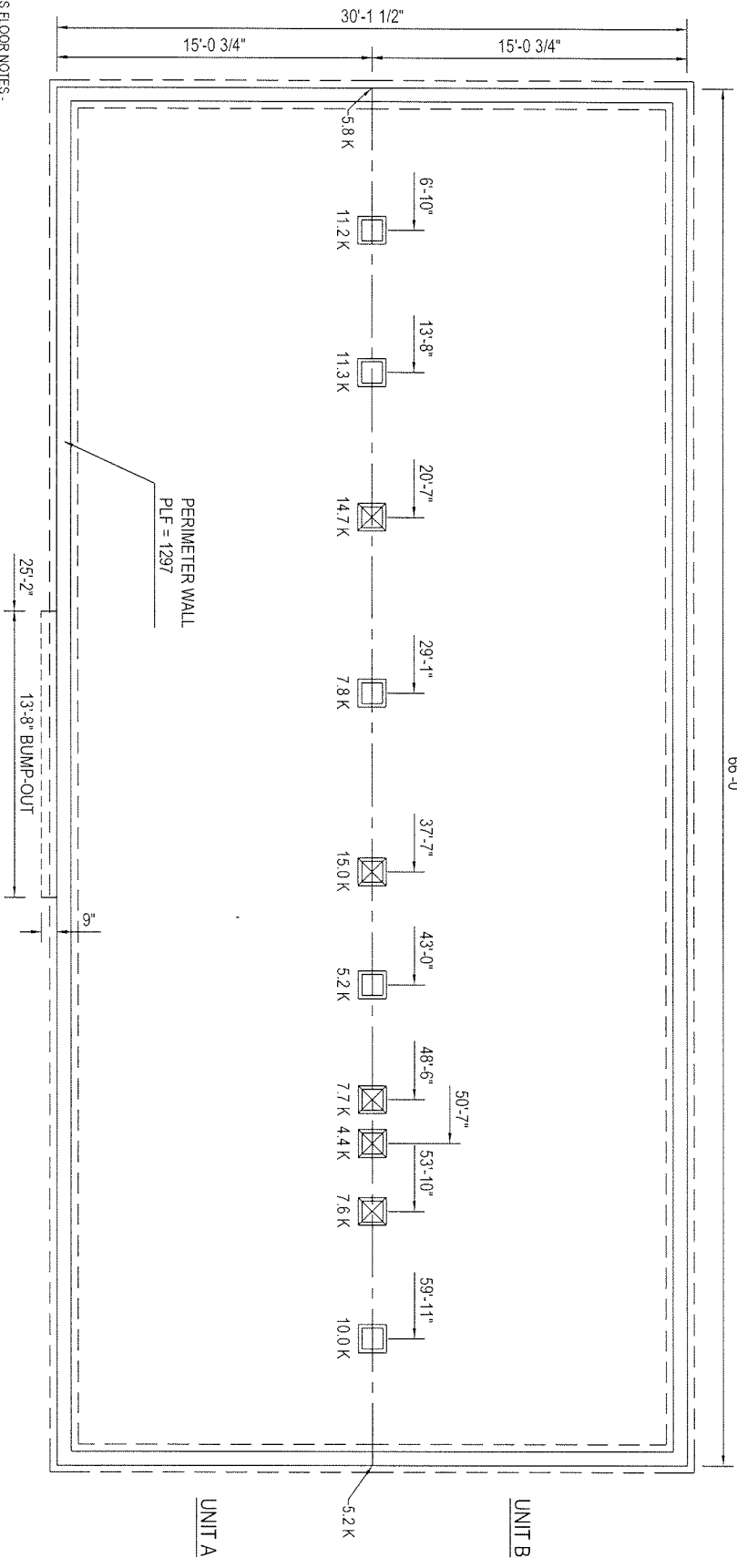
Footings size (in.)	Footings max. load (lbs.) for 8" x16" pier		
1500 PSF	2000 PSF	2500 PSF	
*16x16x6	2.5K	3.4K	4.3K
*20x20x6	4.0K	5.3K	6.7K
24x24x8	5.6K	7.6K	9.6K
30x30x10	8.5K	11.7K	14.8K
36x36x12	12.4K	16.7K	20.7K
42x42x14	16.5K	22.4K	28.2K
48x48x14	21.2K	N/A	N/A

COLUMNS & FOOTINGS MUST BE RATED TO MEET THE CENTER LINE LOADS LISTED

40 PSF

Kip loads noted are based on allowable stress design (ASD). Capacity of supports (columns, footings, etc.) must exceed noted Kip loads.

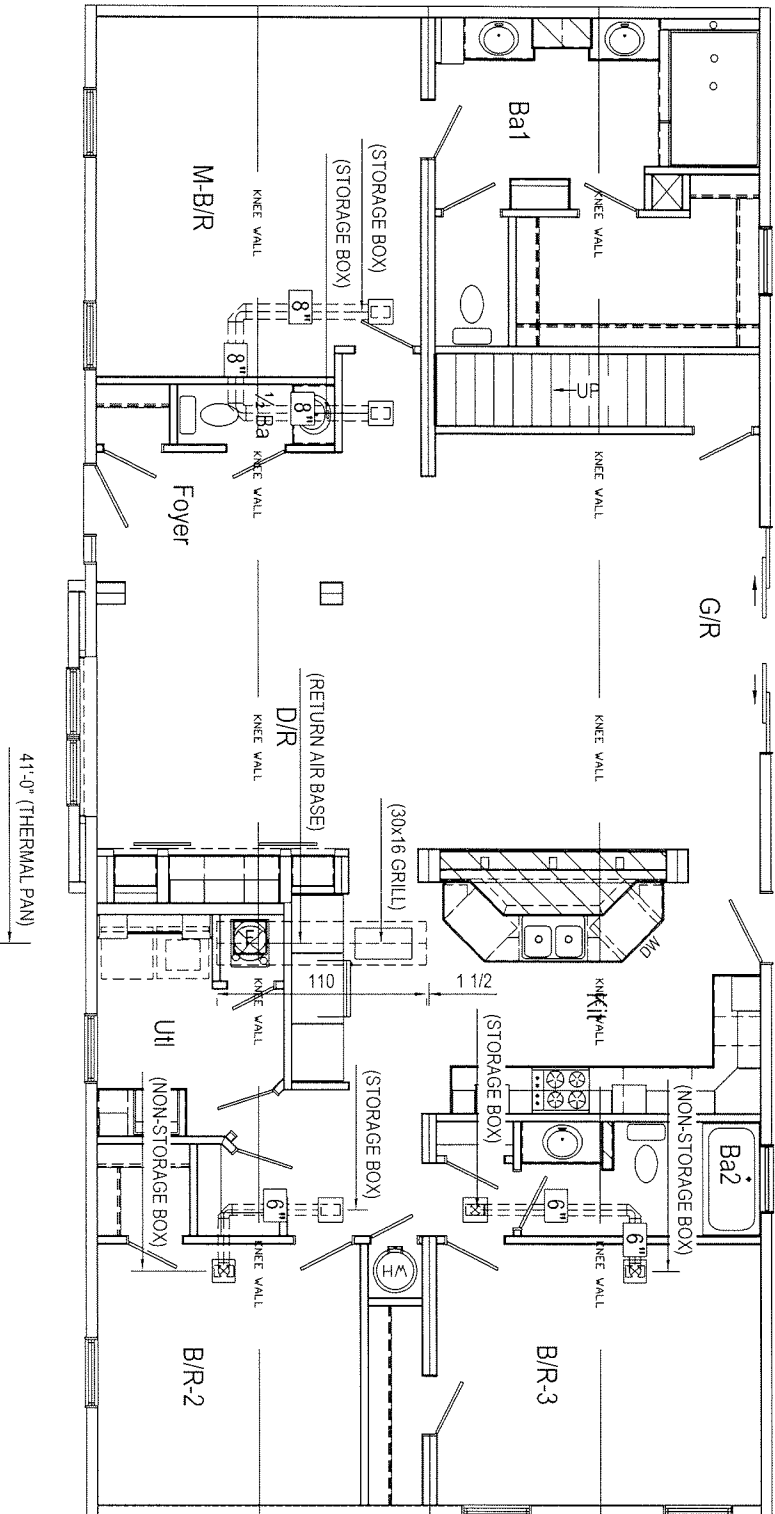
* = A 4" thick pre-cast footer of equivalent width and length may be used in place of a 6" thick cast in place footer. Footer size must be designed by others to site conditions if noted kip load exceeds capacities listed above



- 2X10 OR TRUSS FLOOR NOTES.
- FOUNDATION LAYOUT IS APPLICABLE TO NOTED MAXIMUM SNOW LOADING AND MINIMUM SOIL BEARING PRESSURE. REFER TO INSTALLATION MANUAL FOR OTHER APPLICABLE INFORMATION. CONSULT LOCAL OFFICIALS AND THE APPLICABLE LOCAL CODES FOR OTHER REQUIREMENTS (I.E. DRAINAGE, DAMP-PROOFING, BACKFILL SUPPORT, ETC.)
- WIDTH DIMENSIONS SHOWN INCLUDE A 3/4" ALLOWANCE PER HOME SECTION FOR HOMES WITH FACTORY-INSTALLED O.S.B. ON THE MARRIAGE WALL. THIS ALLOWANCE TAKES INTO ACCOUNT THE 7/16" O.S.B. MATERIAL INSTALLED ON EACH MARRIAGE WALL PLUS ALLOWANCE DUE TO OTHER FACTORS. IF HOME DOES NOT INCLUDE O.S.B. ON THE MARRIAGE WALL, FOUNDATION WIDTH IS TO BE SIZED EQUAL TO ACTUAL MANUFACTURED FLOOR WIDTH. LESSER DIMENSION, IF SHOWN, INDICATES ACTUAL FLOOR WIDTH. THESE DIMENSIONS DO NOT ALLOW FOR ANY VARIANCE THAT MAY OCCUR IN SITE INSTALLATION SUCH AS GAPPING, OFF CENTER SET OR OTHER FIELD-ENCOUNTERED VARIABLES. ANY ADJUSTMENTS NEEDED IN FOUNDATION WIDTH DUE TO SUCH VARIANCES ARE AT THE DISCRETION OF THE INSTALLER.
- FOR DEVIATIONS &/OR OTHER FOUNDATION DESIGNS CONSULT A LOCAL PROFESSIONAL ENGINEER & YOUR LOCAL BUILDING OFFICIAL.
- SILL PLATE FASTENING TO BE PER INSTALLATION MANUAL AND/OR LOCAL CODES. SILL FASTENING REQUIREMENT IS PER APPLICABLE WIND SPEED AND SEISMIC ZONES. SEE YOUR HOME DATA PLATE FOR APPLICABLE ZONES.
- CONCRETE COMPRESSIVE STRENGTH (FCI) 2800 PSI MINIMUM.
- CENTERLINE LINE SUPPORTS AND SPACING ARE BASED ON (2) 2X10S SP#42 ON EACH HALF (4-2X10S TOTAL).
- CRACKSPACE VENTILATION IS NOT REQUIRED WHEN INSULATION IS APPLIED TO CRACKSPACE WALLS AS REQUIRED BY RESCHECK (CONDITIONED AIR). INSTALLATION OF VENTS IN CRACKSPACE WALLS WOULD MANDATE INSULATING THE FLOOR SYSTEM PER APPLICABLE THERMAL CALCULATIONS. REFER TO IRC 408.2.11 SO. FT. NET PER EACH 150 SQ. FT. OF FOUNDATION AREA).
- FOUNDATION CONSTRUCTION AND THE DOWN REQUIREMENTS FOR HOMES LOCATED IN 90 MPH OR LESS WIND ZONES MAY USE IRC GUIDELINES UNLESS NOTED OTHERWISE.

Builder:	Commodore Homes of Indiana	Calcut:	3265
Title:	Foundation 2x10 Marriage Line without Stair	Revisions:	
		Date:	
		Number:	
		Scale:	1/8" = 1'-0"
		Drawn By:	BB
		Date:	06/14/2018
		Reference:	AW460-A
		Cast STOCK:	
		Dir:	CALLAGHAN HOMES
		S/N:	16248
		Model/Eng. No.:	AW460-A7
		Pg.:	TWOS-40#

FOUNDATION SHOWN MUST BE DESIGNED BY OTHERS TO THE SITE CONDITIONS. THIS INCLUDES SEISMIC DESIGN AND ATTACHING THE HOME TO THE FOUNDATION. ALONG WITH RESISTANCE TO LATERAL, LONGITUDINAL SHEAR, UPLIFT AND DOWNLIFT FORCES IN BOTH DIRECTIONS.



Return Air Material/Quantity List	
Non-Storage Box (12x12x4)	2
Storage Box (13x13x9)	4
10x6 Ceiling Grille	6
16x30 Ceiling Grille	1
6" Insulated Flex Duct	20'

8" Insulated Flex Duct	17'
18" Insulated Flex Duct	3'
6" Start Collar	4
8" Start Collar	2
18" Start Collar	1
Thermal Pan	10'

41'-0" (THERMAL PAN)

NOTE:
GRILLES ARE SHOWN WITH RUNNING DIMENSIONS ONLY.

MAIN RETURN AIR GRILLE NOT TO BE WITHIN 36" OF A SMOKE ALARM, NOR WITHIN 10 FEET OF A NON-SEALED COMBUSTION FIREPLACE FIRE BOX WHICH OCCURS IN THE SAME ROOM AS THE GRILLE. AIR EXCHANGE OR TRANSFER GRILLES ARE EXEMPT.

Builder: Commodore Homes of Indiana
Title: Ceiling Return Air System

Calcutt
3265

Revisions
Number

Date

Scale:
1/8" = 1'-0"
Drawn By:
MLH

Date:
08/08/2018

Cust: STOCK
Dir: CALLAGHAN HOMES

Model/Eng. No.:
AW460-A7
CRAS

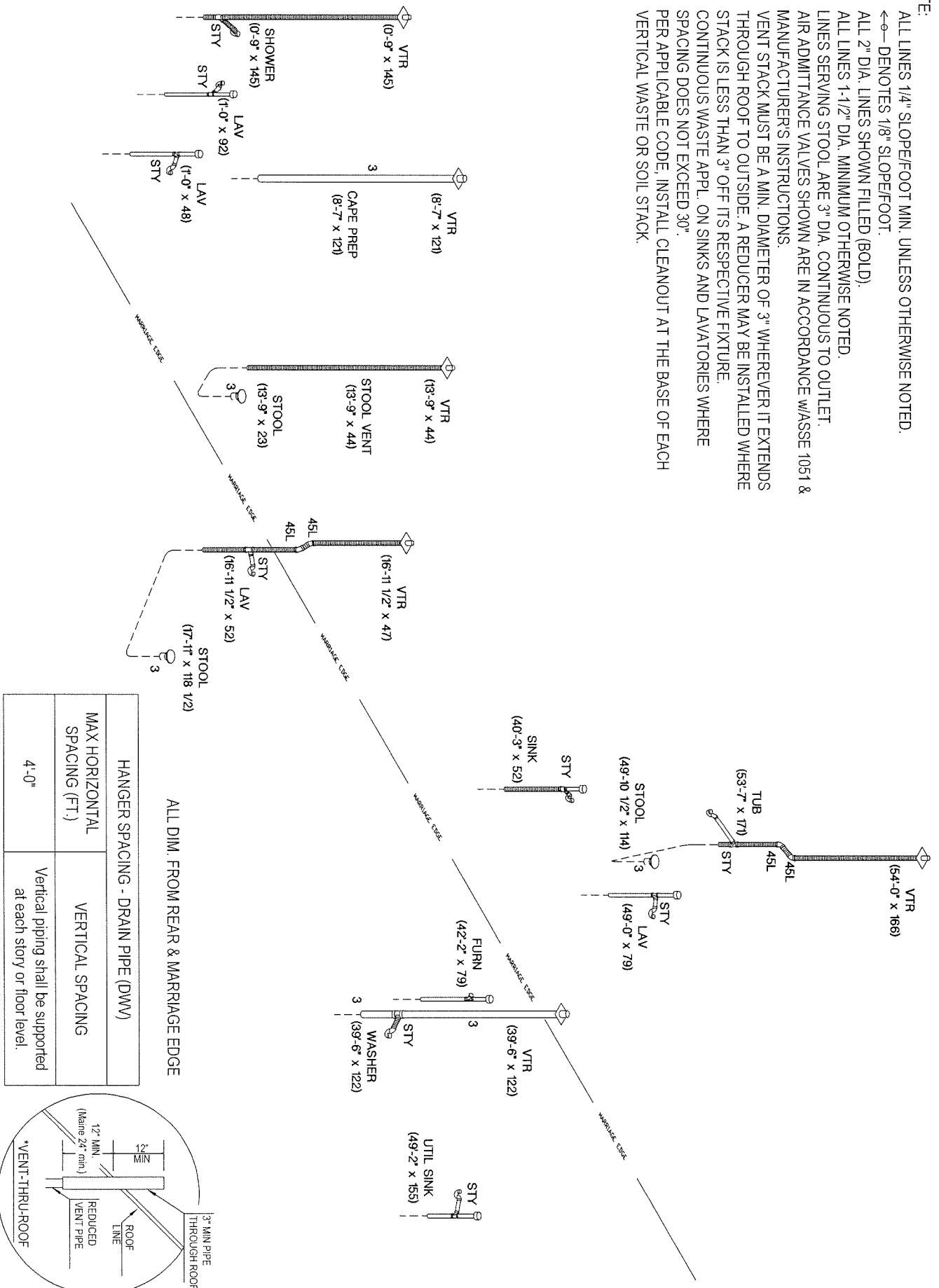
Pg.:

16248

Reference:
AW460-A

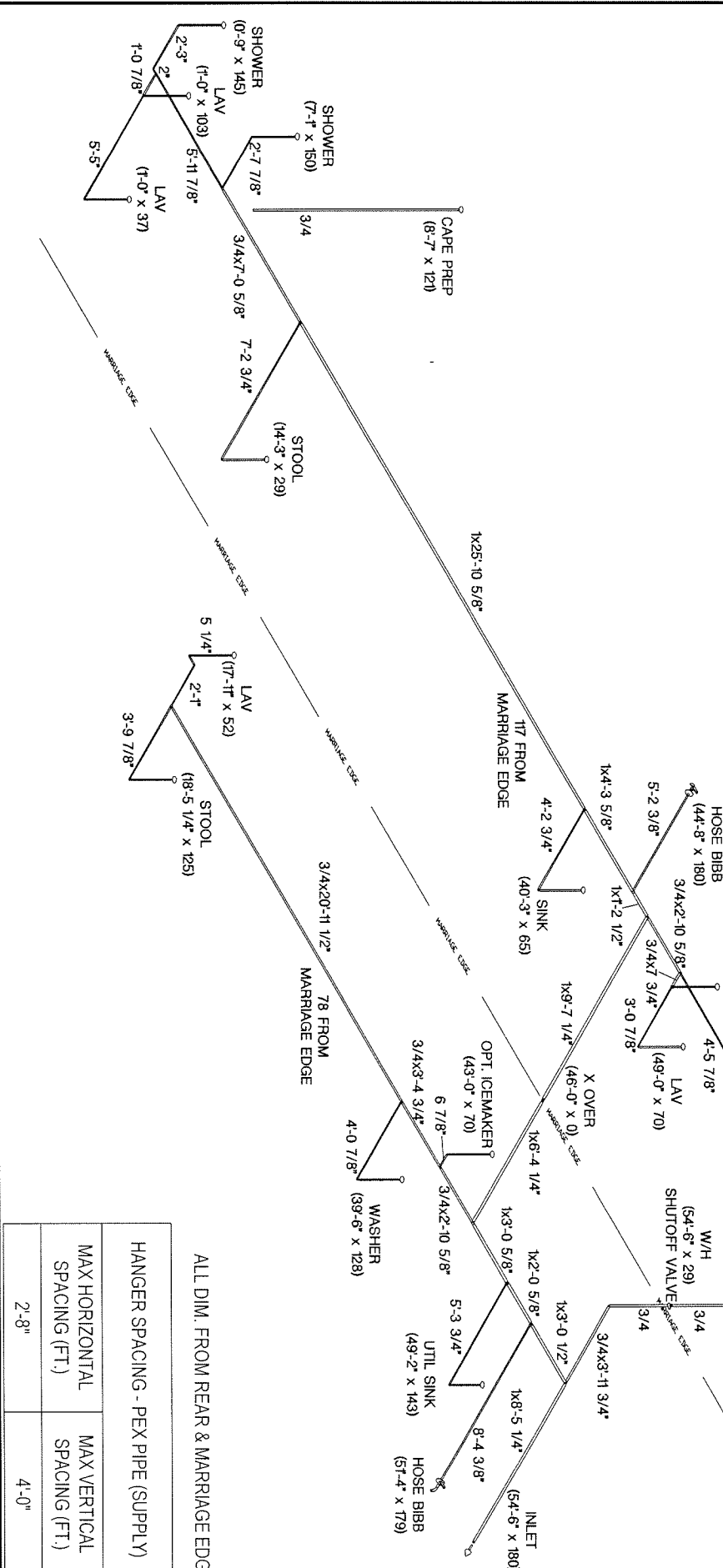
SIN: 16248

- NOTE:
1. ALL LINES 1/4" SLOPE/FOOT MIN. UNLESS OTHERWISE NOTED.
 2. ←→ DENOTES 1/8" SLOPE/FOOT.
 3. ALL 2" DIA. LINES SHOWN FILLED (BOLD).
 4. ALL LINES 1-1/2" DIA. MINIMUM OTHERWISE NOTED.
 5. LINES SERVING STOOL ARE 3" DIA. CONTINUOUS TO OUTLET.
 6. AIR ADMITTANCE VALVES SHOWN ARE IN ACCORDANCE W/ASSE 1051 & MANUFACTURER'S INSTRUCTIONS.
 7. VENT STACK MUST BE A MIN. DIAMETER OF 3" WHEREVER IT EXTENDS THROUGH ROOF TO OUTSIDE. A REDUCER MAY BE INSTALLED WHERE STACK IS LESS THAN 3" OFF ITS RESPECTIVE FIXTURE.
 8. CONTINUOUS WASTE APPL. ON SINKS AND LAVATORIES WHERE SPACING DOES NOT EXCEED 30".
 9. PER APPLICABLE CODE, INSTALL CLEANOUT AT THE BASE OF EACH VERTICAL WASTE OR SOIL STACK.



Builder:	Commodore Homes of Indiana		Calculat:	3266	
Title:	Drain Waste and Vent (3D)		Revisions	Date	Number
Scale:	CUSTOM	Date:	08/08/2018	Drawn By:	MLH
Reference:	AW460-A	Dir:	CALLAGHAN HOMES	S/N:	16248
Modeling No.:	AW460-A7		Pg.:	DWP	

- NOTE:
- 3/4" I.D. GALVANIZED, OR COPPER RELIEF DRAIN (NOT SHOWN) THRU FLOOR w/VISIBLE AIR GAP
 - INLET WITH 1" CAP & CHAIN.
 - ALL WATER SUPPLY PIPING CONSTRUCTED OF PEX MATERIAL
 - ANTI-SCALD DEVICE ON ALL SHOWER, AND TUB/SHOWER COMBINATIONS.
 - WATER-HAMMER ARRESTORS AT BATTERY OF FIXTURES INSTALLED WHEREVER THERE IS A QUICK-CLOSING VALVE CONFORMING TO ASSE 1010 & MANUFACTURER'S INSTRUCTIONS.
 - SHUT-OFF VALVE IS REQUIRED AT EACH FIXTURE
 - BATHROOMS WITH DOUBLE LAVS ARE FED FROM THE SAME RISER.
 - ANY LINE NOT LABELED IS 1/2" I.D.
 - WATER HEATER TEMPERATURE & PRESSURE RELIEF VALVE AND RELIEF DRAIN PIPE INSTALLED PER MANUFACTURER'S SPECIFICATIONS.
 - SHUT-OFF VALVE AT WATER HEATER IS FULL OPEN VALVE INSTALLED ON COLD WATER SUPPLY PIPE AT EACH WATER HEATER, PER CODE.
 - FULLWAY SHUT-OFF VALVE WITH BLEED ORIFICE INSTALLED AT MAIN INLET SERVICE VALVE, INSTALLED ON-SITE, PER CODE.

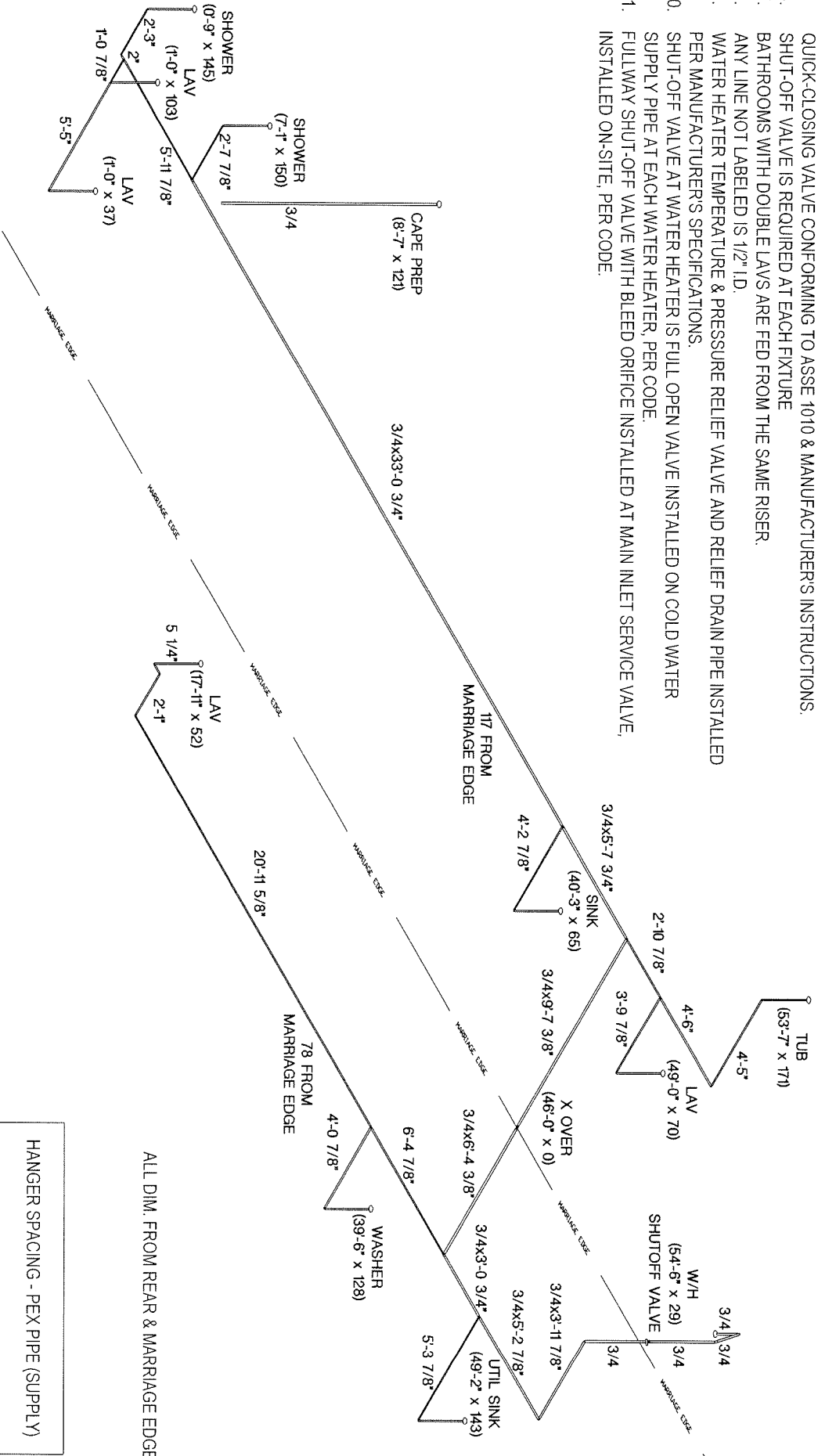


ALL DIM. FROM REAR & MARRIAGE EDGE

HANGER SPACING - PEX PIPE (SUPPLY)	
MAX HORIZONTAL SPACING (FT.)	2'-8"
MAX VERTICAL SPACING (FT.)	4'-0"

Builder:	Commodore Homes of Indiana		Calicut:	3266	Scale:	CUSTOM	Date:	08/08/2018	Cust. STOCK	Modeling No.:	AM460-A7	
Title:	Cold Water Lines		Revisions:		Drawn By:	MLH	Reference:	AW460-A	Dir:	CALLAGHAN HOMES	Pg.:	COLD

- NOTE:
1. 3/4" I.D. GALVANIZED, OR COPPER RELIEF DRAIN (NOT SHOWN) THRU FLOOR W/VISIBLE AIR GAP
 2. INLET WITH 1" CAP & CHAIN.
 3. ALL WATER SUPPLY PIPING CONSTRUCTED OF PEX MATERIAL
 4. ANTI-SCALD DEVICE ON ALL SHOWER, AND TUB/SHOWER COMBINATIONS.
 5. WATER-HAMMER ARRESTORS AT BATTERY OF FIXTURES INSTALLED WHEREVER THERE IS A QUICK-CLOSING VALVE CONFORMING TO ASSE 1010 & MANUFACTURERS INSTRUCTIONS.
 6. SHUT-OFF VALVE IS REQUIRED AT EACH FIXTURE
 7. BATHROOMS WITH DOUBLE LAVS ARE FED FROM THE SAME RISER.
 8. ANY LINE NOT LABELED IS 1/2" I.D.
 9. WATER HEATER TEMPERATURE & PRESSURE RELIEF VALVE AND RELIEF DRAIN PIPE INSTALLED PER MANUFACTURER'S SPECIFICATIONS.
 10. SHUT-OFF VALVE AT WATER HEATER IS FULL OPEN VALVE INSTALLED ON COLD WATER SUPPLY PIPE AT EACH WATER HEATER, PER CODE.
 11. FULLWAY SHUT-OFF VALVE WITH BLEED ORIFICE INSTALLED AT MAIN INLET SERVICE VALVE, INSTALLED ON-SITE, PER CODE.



ALL DIM. FROM REAR & MARRIAGE EDGE

HANGER SPACING - PEX PIPE (SUPPLY)	
MAX HORIZONTAL SPACING (FT.)	MAX VERTICAL SPACING (FT.)
2'-8"	4'-0"

Builder:	Commodore Homes of Indiana		Callout:	3265	
Title:	Hot Water Lines		Revisions	Date	Number
Scale:	CUSTOM	Date:	08/08/2018	Drawn By:	MLH
Reference:	AW460-A	Cust. STOCK	Dir:	CALLAGHAN HOMES	
Model/Eng. No.:	AW460-A7		S/N:	16248	
Pg.:	HOT				