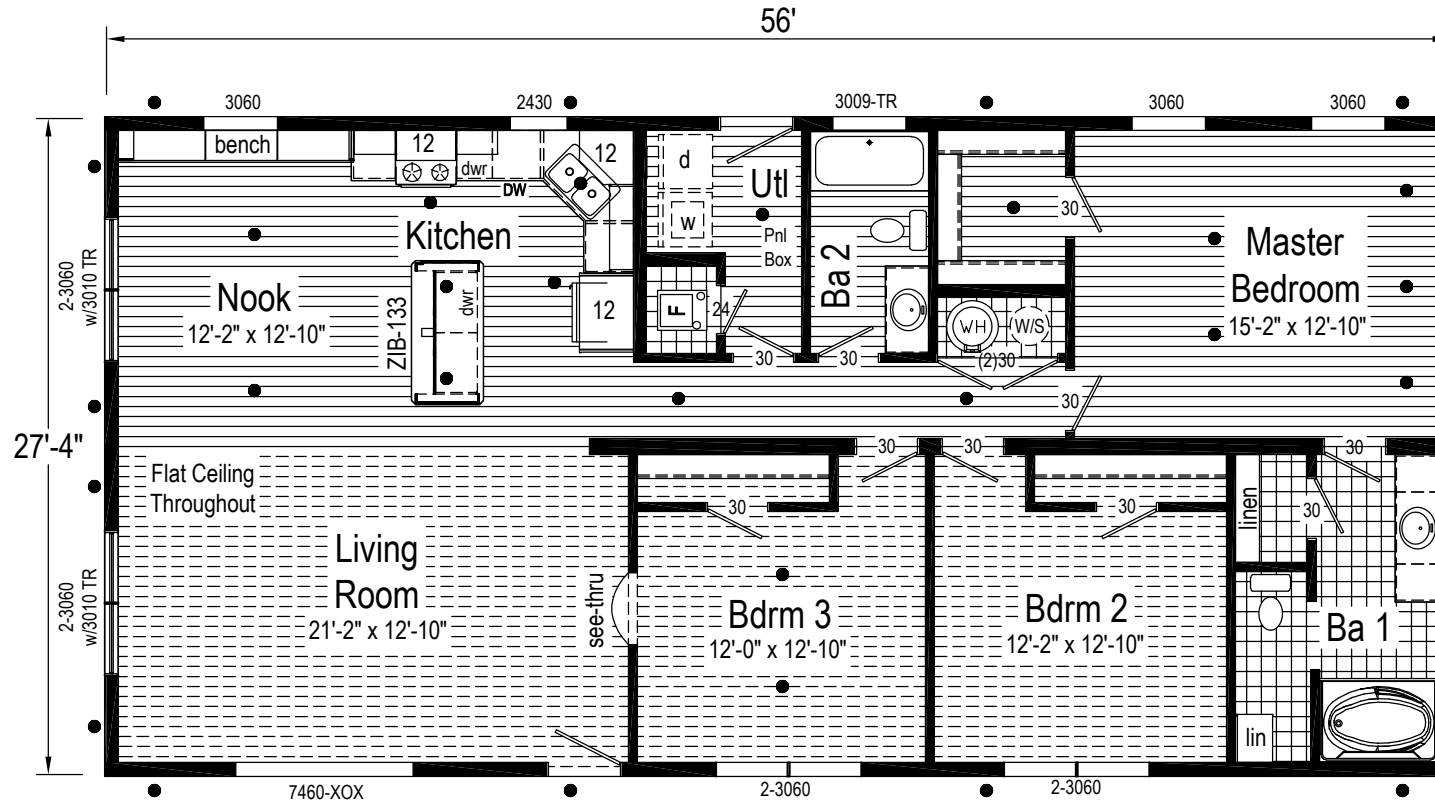


NOTE: This home may require wall bracing tie-downs depending on wind/seismic design. Please refer to the permit set for tie-down loads and locations if applicable. Some areas of the exterior wall sheathing may be shipped loose to allow access for tie-down installation. All tie-down designs are by others.

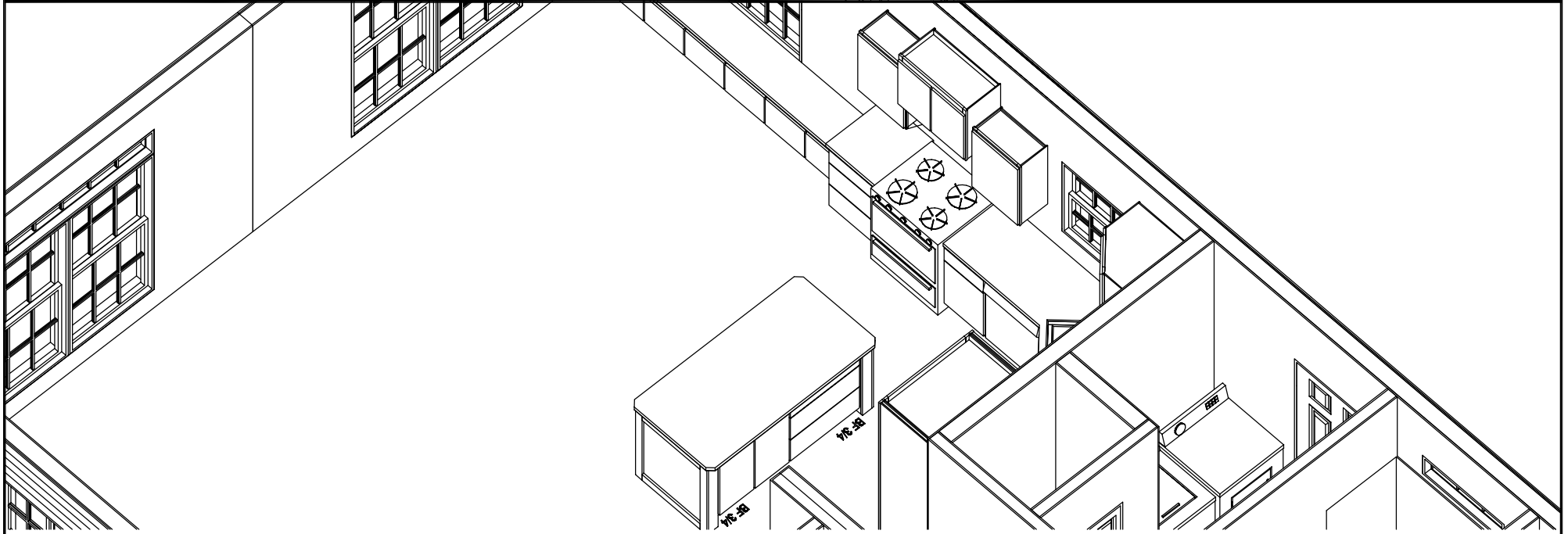
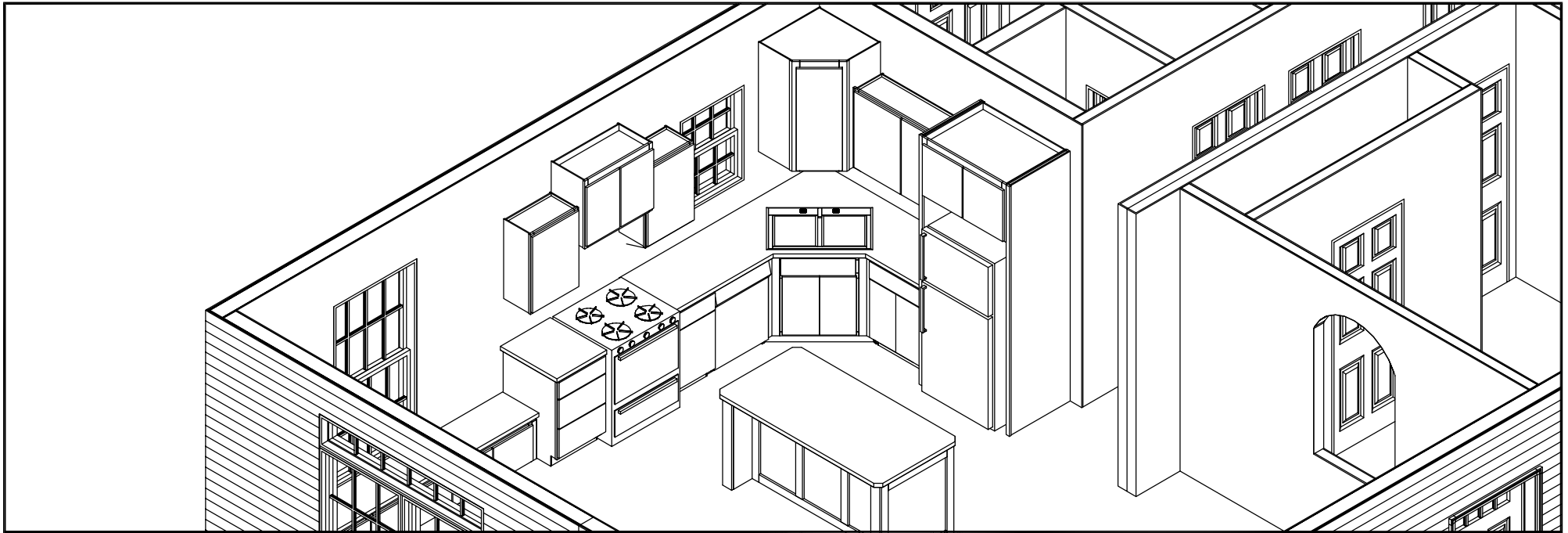
2LM1002-R1		10/19/20 01:48 PM		By: bballines
QTY	U/M	SUPPLIER	DESCRIPTION	CLASS
1	Each	MI	Window, MI 2430	Window
1	Each	MI	Window, MI TR-3009	Window
1	Each	MI	Window, MI Sliding Triple 7460-XOX Saftey	Window
3	Each	MI	Window, MI 3060	Window
2	Each	MI	Window, (2) MI 3060 w1Trans - 6070	Window
2	Each	MI	Window, (2) MI 3060	Window



Note: Because of varying state requirements and optional equipment, some or all of the utility locations might change per floor plan (ie: furnaces, w/h, stairwell). Consult your sales representative for exact specifications.

2LM1002-R1 2856 Approx. 1531 Sq. Ft.

Builder: Commodore Homes of Indiana	Callout: 2856	Revisions	Scale: 1/8" = 1'-0"	Date: 10/19/2020	Cust: STOCK	Model/Eng. No.: 2LM1002-R1
Title: Literature		Drawn By: BB	Reference: RG798-A		Dir: GOEGLIN HOMES, LLC.	LIT
					S/N: 17493	Pg.: LIT



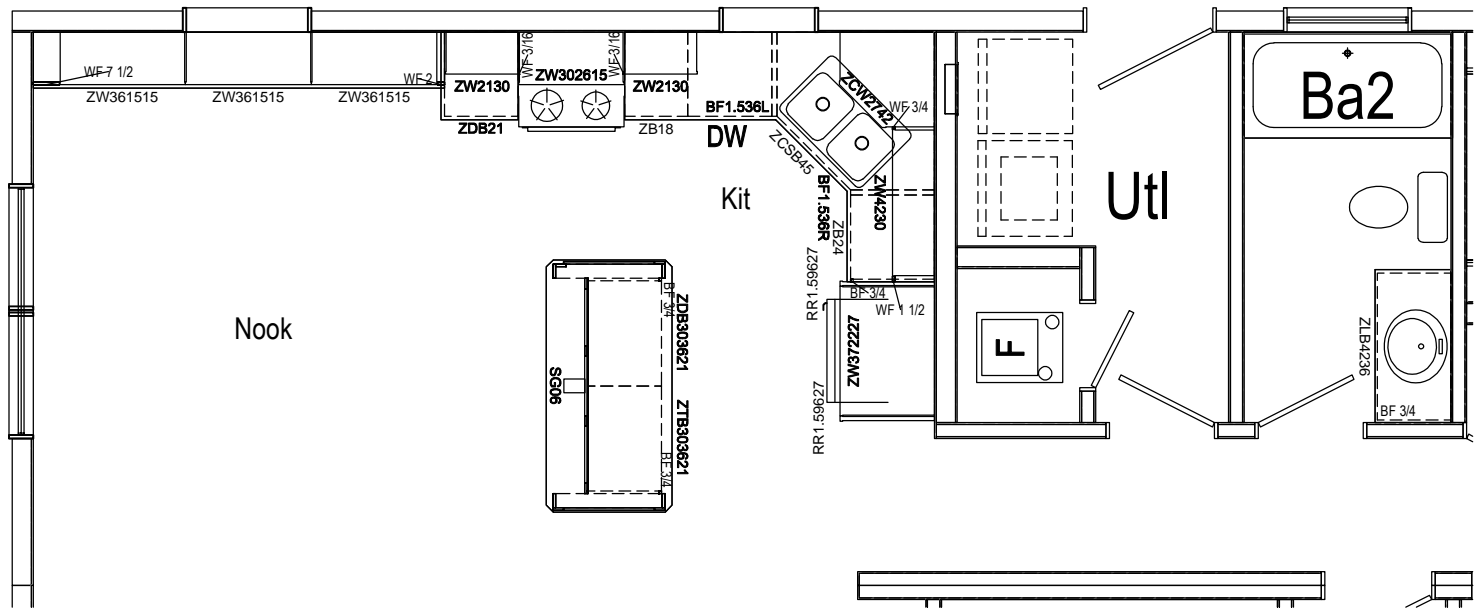
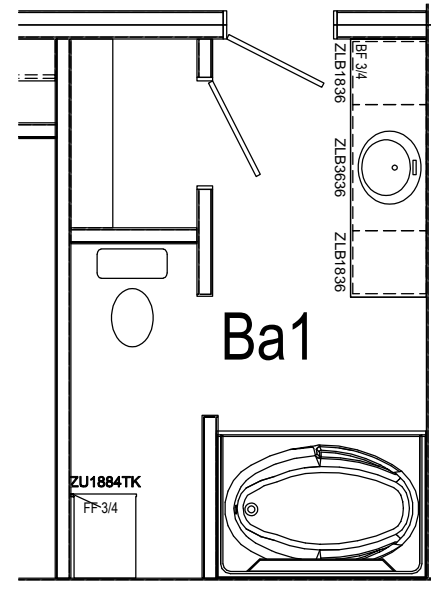
NOTE: This is an artistic rendering. building materials may be optional or differ from what is shown.

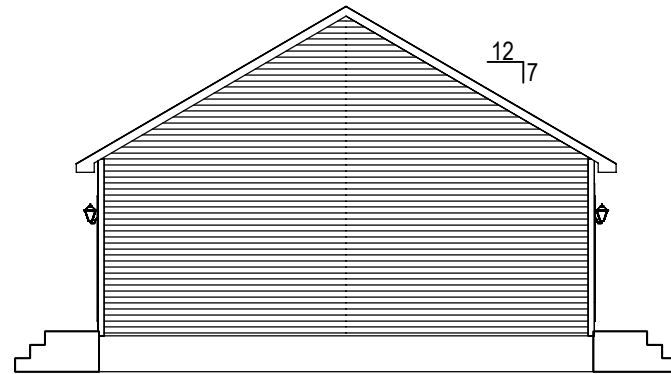
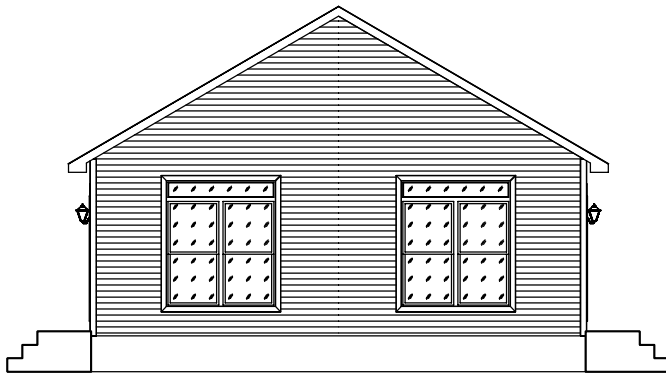
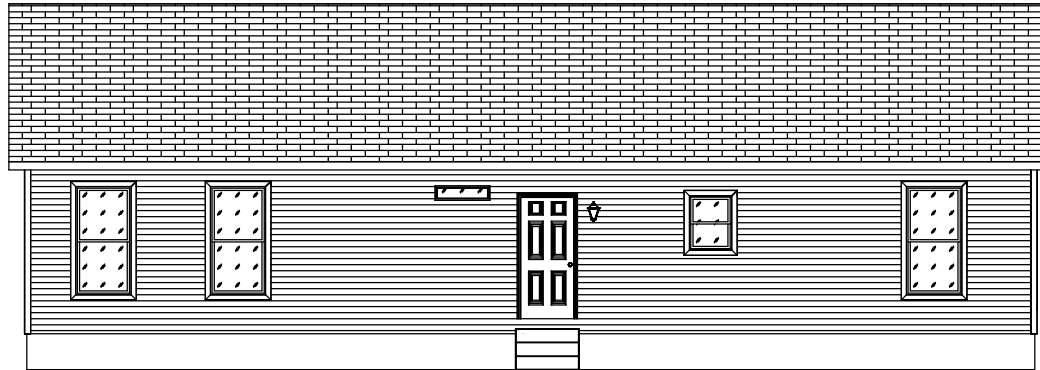
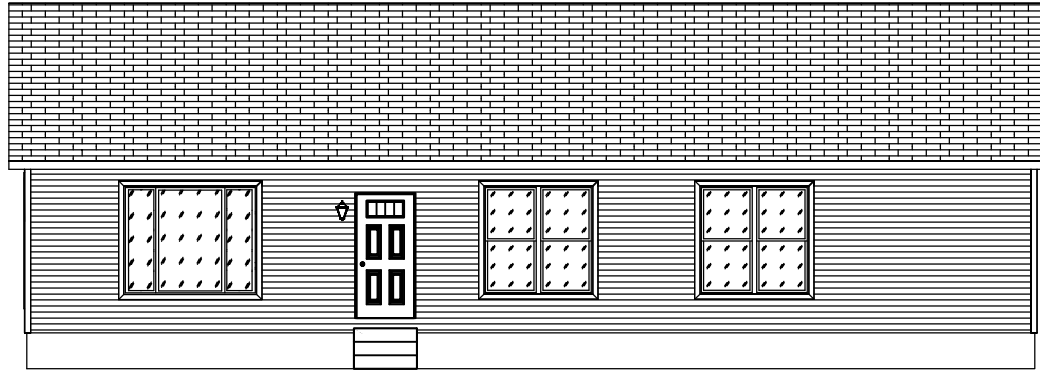
Builder: Commodore Homes of Indiana	Callout: 2856	Revisions	Scale: N.T.S.	Date: 10/19/2020	Cust: STOCK	Model/Eng. No.:
Title: Isometric		Drawn By: BB	Reference: RG798-A		Dir: GOEGLIN HOMES, LLC.	2LM1002-R1
					S/N: 17493	ISO
						Pg.:

Bath #1 Door/Drawer Schedule				
Qty	Size (W x H)	Style	Type	Cabinet
4	17 1/2 x 29	Door	Base	(1)ZLB1836, (1)ZLB1836, (2)ZLB3636
2	17 1/2 x 39	Door	Full	(2)ZU1884TK

Bath #2 Door/Drawer Schedule				
Qty	Size (W x H)	Style	Type	Cabinet
2	20 1/2 x 29	Door	Base	(2)ZLB4236

Kitchen Door/Drawer Schedule				
Qty	Size (W x H)	Style	Type	Cabinet
4	11 5/8 x 22 1/4	Door	Base	(2)ZCSB45, (2)ZB24
2	23 1/2 x 6 1/2	Drawer	Base	(1)ZCSB45, (1)ZB24
1	17 1/2 x 22 1/4	Door	Base	(1)ZB18
1	17 1/2 x 6 1/2	Drawer	Base	(1)ZB18
2	14 1/2 x 29	Door	Base	(2)ZTB303621
2	29 1/2 x 11 3/8	Drawer	Base	(2)ZDB303621
1	29 1/2 x 6 1/2	Drawer	Base	(1)ZDB303621
2	20 1/2 x 11	Drawer	Base	(2)ZDB21
1	20 1/2 x 6 1/2	Drawer	Base	(1)ZDB21
6	17 1/2 x 13 1/2	Door	Wall	(2)ZW361515, (2)ZW361515
4	20 1/2 x 29	Door	Wall	(1)ZW2130, (1)ZW2130, (2)ZW4230
2	14 1/2 x 22 1/2	Door	Wall	(2)ZW302615
1	14 1/2 x 39	Door	Wall	(1)ZCW2742
2	17 1/2 x 19 1/2	Door	Wall	(2)ZW372227





NOTE: This is an artistic rendering. building materials may be optional or differ from what is shown.

2LM1002-R1		10/19/20 01:48 PM		By: bballines	
QTY	U/M	SUPPLIER	DESCRIPTION	CLASS	
1	Each Ml		Window, MI 2430	Window	
1	Each Ml		Window, MI TR-3009	Window	
1	Each Ml		Window, MI Sliding Triple 7460-XOX Safety	Window	
3	Each Ml		Window, MI 3060	Window	
2	Each Ml		Window, (2) MI 3060 w/Trans - 6070	Window	
2	Each Ml		Window, (2) MI 3060	Window	

Builder: Commodore Homes of Indiana	Callout: 2856	Revisions	Scale: N.T.S.	Date: 10/19/2020	Cust: STOCK	Model/Eng. No.: 2LM1002-R1
Title: Elevations		Drawn By: BB	Reference: RG798-A		Dir: GOEGLIN HOMES, LLC.	EL
					S/N: 17493	Pg.: EL

Footing size (in.)	Footing max. load (lbs.) with steel column		
	1500 PSF	2000 PSF	2500 PSF
*16x16x8	2.5K	3.4K	4.3K
*20x20x8	4.0K	5.3K	6.7K
24x24x10	5.6K	7.6K	9.6K
30x30x12	8.5K	11.7K	14.8K
36x36x14	12.4K	16.7K	20.7K
42x42x16	16.5K	22.4K	27.2K
48x48x16	21.2K	N/A	N/A

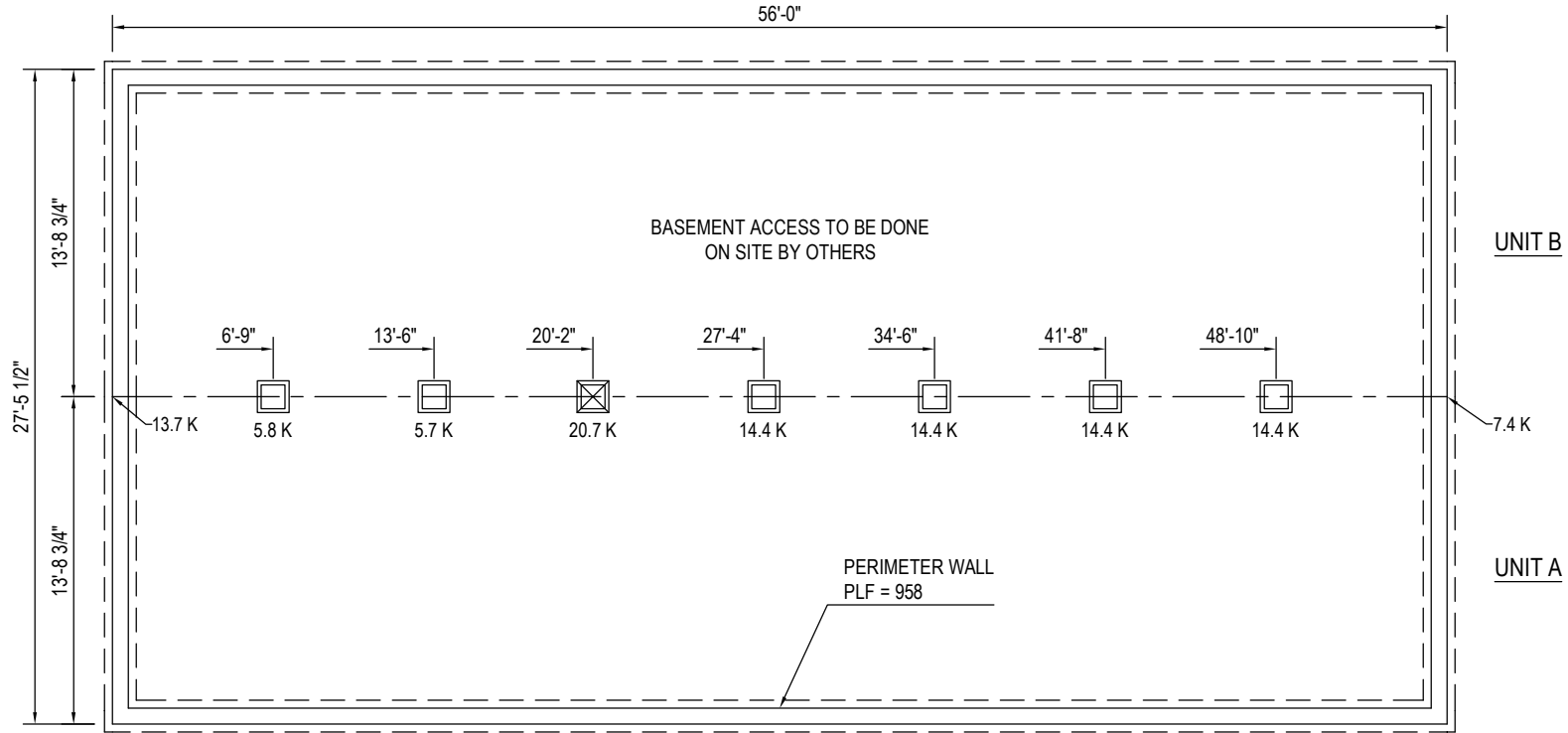
* = A 4" thick pre-cast footer of equivalent width and length may be used in place of a 6" thick cast in place footer.
 Footer size must be designed by others to site conditions if noted kip load exceeds capacities listed above

COLUMNS & FOOTINGS MUST BE RATED TO MEET THE CENTER LINE LOADS LISTED

GROUND SNOW LOAD
40 PSF

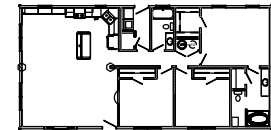
Kip loads noted are based on allowable stress design (ASD).
 Capacity of supports (columns, footings, etc.) must exceed noted Kip loads.

FOUNDATION SHOWN MUST BE DESIGNED BY OTHERS TO THE SITE CONDITIONS. THIS INCLUDES SEISMIC DESIGN AND ATTACHING THE HOME TO THE FOUNDATION, ALONG WITH RESISTANCE TO LATERAL, LONGITUDINAL SHEAR, UPLIFT AND DOWNLIFT FORCES IN BOTH DIRECTIONS.



- 2X10 OR TRUSS FLOOR NOTES -

- FOUNDATION LAYOUT IS APPLICABLE TO NOTED MAXIMUM SNOW LOADING AND MINIMUM SOIL BEARING PRESSURE. REFER TO INSTALLATION MANUAL FOR OTHER APPLICABLE INFORMATION. CONSULT LOCAL OFFICIALS AND THE APPLICABLE LOCAL CODES FOR OTHER REQUIREMENTS (I.E. DRAINAGE, DAMP-PROFFING, BACKFILL SUPPORT, ETC.).
- WIDTH DIMENSIONS SHOWN INCLUDE A 3/4" ALLOWANCE PER HOME SECTION FOR HOMES WITH FACTORY-INSTALLED O.S.B. ON THE MARRIAGE WALL MATE LINE. THIS ALLOWANCE TAKES INTO ACCOUNT THE 7/16" O.S.B. MATERIAL INSTALLED ON EACH MARRIAGE WALL PLUS ALLOWANCE DUE TO OTHER FACTORS. IF HOME DOES NOT INCLUDE O.S.B. ON THE MARRIAGE WALL MATE LINE, FOUNDATION WIDTH IS TO BE SIZED EQUAL TO ACTUAL MANUFACTURED FLOOR WIDTH. LESSER DIMENSION, IF SHOWN, INDICATES ACTUAL FLOOR WIDTH. THESE DIMENSIONS DO NOT ALLOW FOR ANY VARIANCE THAT MAY OCCUR IN SITE INSTALLATION SUCH AS GAPPING, OFF CENTER SET OR OTHER FIELD-ENCOUNTERED VARIABLES. ANY ADJUSTMENTS NEEDED IN FOUNDATION WIDTH DUE TO SUCH VARIANCES ARE AT THE DISCRETION OF THE INSTALLER.
- FOR DEVIATIONS &/OR OTHER FOUNDATION DESIGNS CONSULT A LOCAL PROFESSIONAL ENGINEER & YOUR LOCAL BUILDING OFFICIAL.
- SILL PLATE FASTENING TO BE PER INSTALLATION MANUAL AND/OR LOCAL CODES. SILL FASTENING REQUIREMENT IS PER APPLICABLE WIND SPEED AND SEISMIC ZONES. SEE YOUR HOME DATA PLATE FOR APPLICABLE ZONES.
- CONCRETE COMPRESSIVE STRENGTH (FC): 2500 PSI MINIMUM.
- CENTERLINE LINE SUPPORTS AND SPACING ARE BASED ON (2) 2X10'S SPF#2 ON EACH HALF (4-2X10'S TOTAL).
- FOUNDATION CONSTRUCTION AND TIE DOWN REQUIREMENTS FOR HOMES LOCATED IN 90 MPH OR LESS WIND ZONES MAY USE APPLICABLE PRESCRIPTIVE CODES & GUIDELINES UNLESS NOTED OTHERWISE.



Builder: Commodore Homes of Indiana	Callout: 2856	Revisions:	Scale: 1/8" = 1'-0"	Date: 10/19/2020	Cust: STOCK	Model/Eng. No.: 2LM1002-R1
Title: Foundation 2x10 Marriage Line with Stair		Drawn By: BB	Reference: RG798-A		Dir: GOEGLIN HOMES, LLC.	TWS-40#
					S/N: 17493	Pg.: