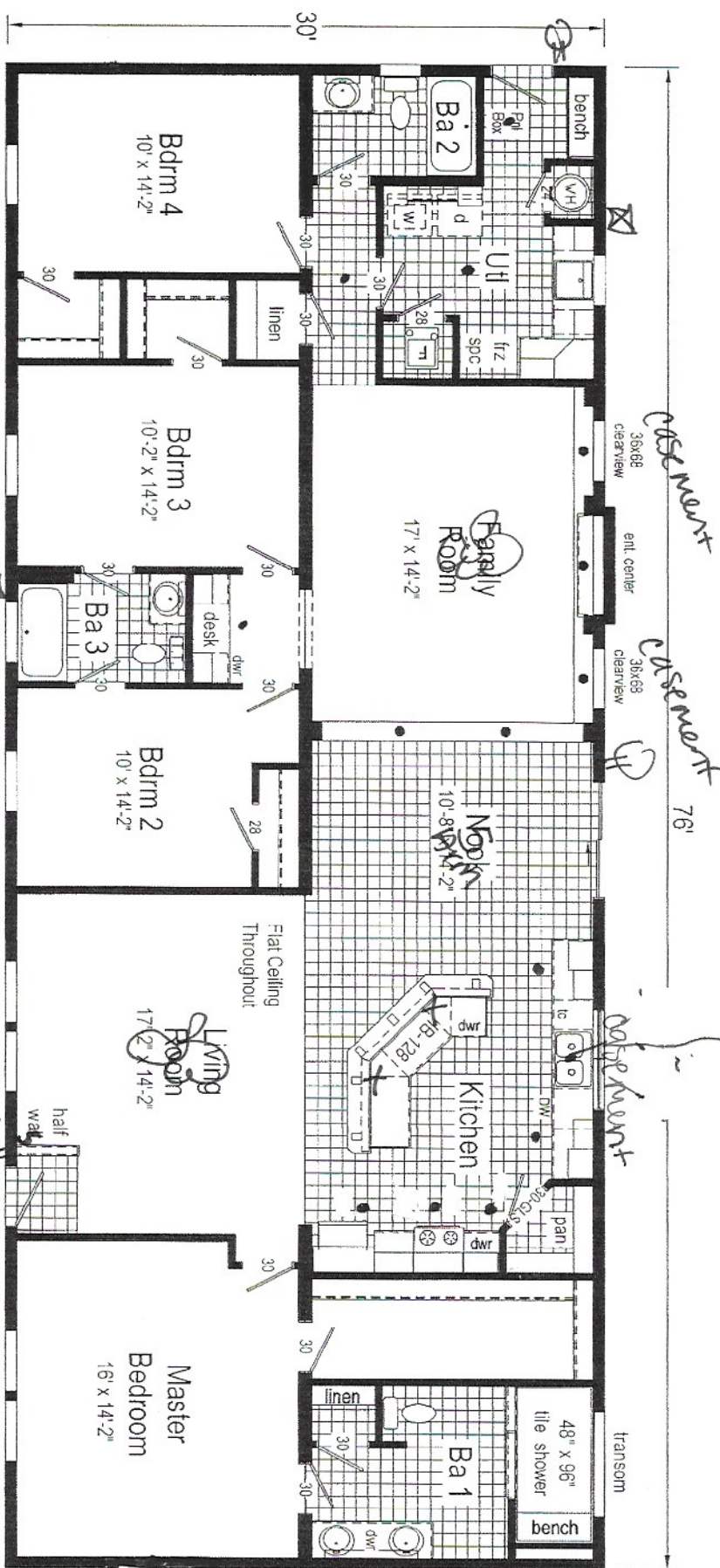


NOTE: This home may require wall bracing tie-downs depending on wind/seismic design. Please refer to the permit set for tie-down loads and locations if applicable. Some areas of the exterior wall sheathing may be shipped loose to allow access for tie-down installation. All tie-down designs are by others.

RX842-A34



RX842-A34 3276 Approx. 2280 Sq. Ft.

| | | | | | | | |
|---|------------------|-----------|--------|------------------------|-----------------------|--------------------------|------------------|
| Builder: Commodore Homes of Indiana | Callout: 3276 | Revisions | | Scale: 1/8" = 1'-0" | Date: 11/03/2016 | Dist: CALLAGHAN HOMES | Modeling No.: |
| Title: Literature | | Date | Number | Drawn By: BB | Reference: RX842-A | S/N: 15424 | RX842-A34 |
| | | | | | | | Pg.: LIT |

Note: Because of varying state requirements and optional equipment, some or all of the utility locations might change per floor plan (ie: furnaces, w/h stairwell). Consult your sales representative for exact specifications